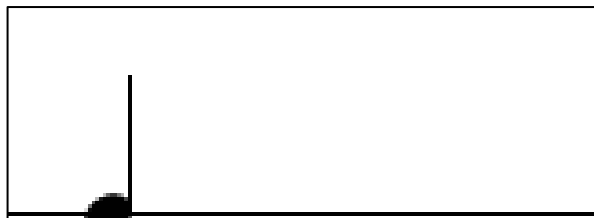
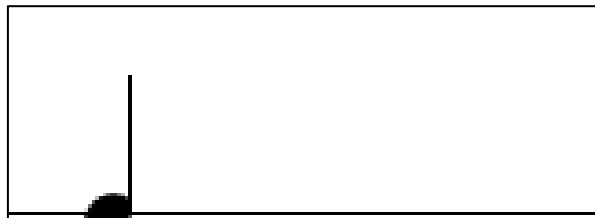


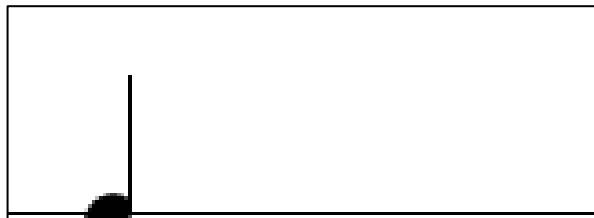
テン




テン




テン



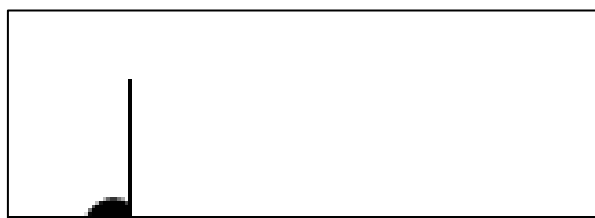
テン



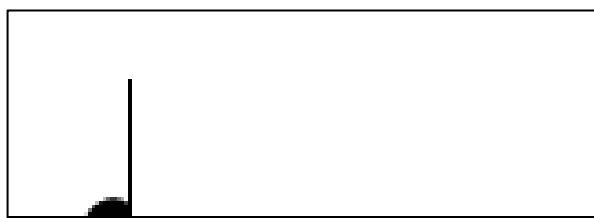
テン



テン



テン



テン



ウン



ウン



ウン



ウン



ウン



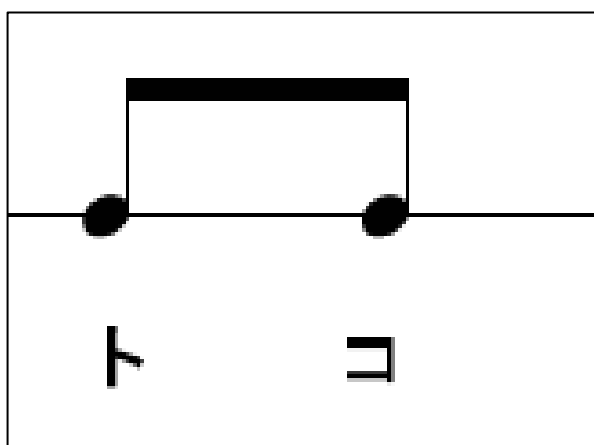
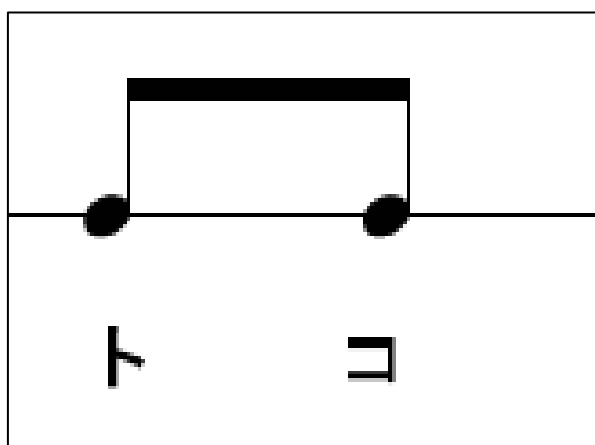
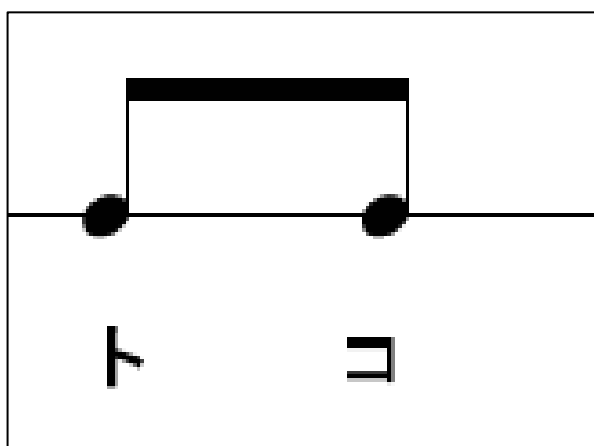
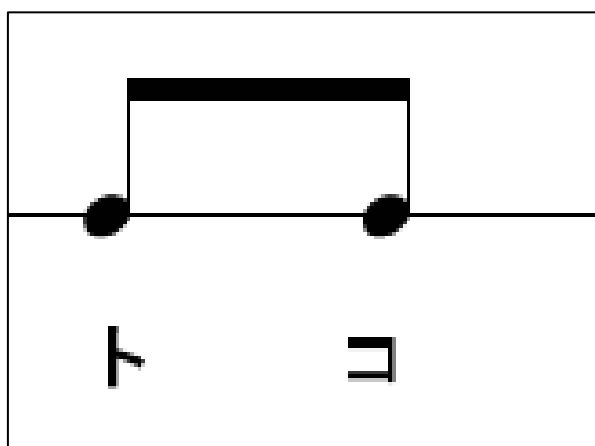
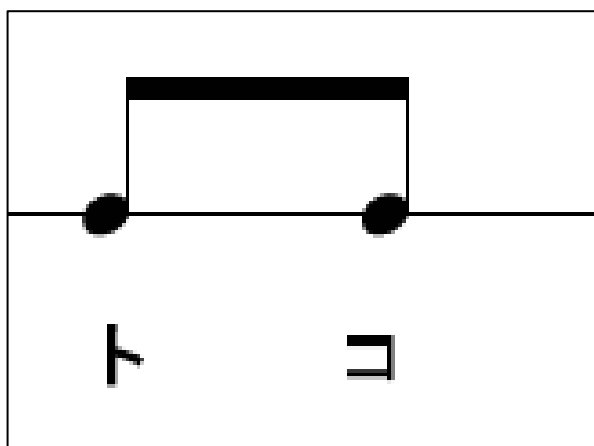
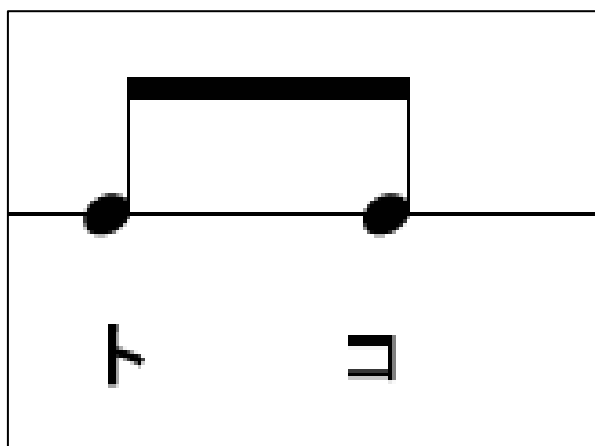
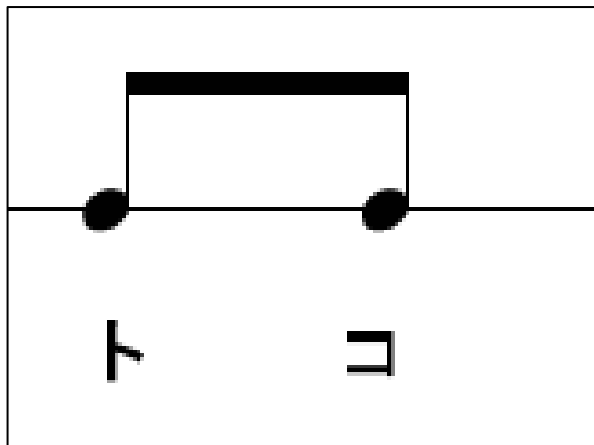
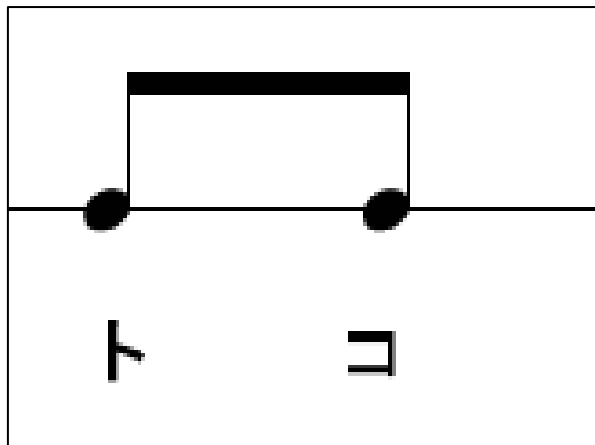
ウン



ウン



ウン



A musical staff with a horizontal line. On the left, a quarter note with a stem pointing down and a flag, positioned below the line. On the right, a quarter note with a stem pointing up and a flag, positioned on the line. Below the staff, the Japanese characters 'ウ' and 'ト' are written.

A musical staff with a horizontal line. On the left, a quarter note with a stem pointing down and a flag, positioned below the line. On the right, a quarter note with a stem pointing up and a flag, positioned on the line. Below the staff, the Japanese characters 'ウ' and 'ト' are written.

A musical staff with a horizontal line. On the left, a quarter note with a stem pointing down and a flag, positioned below the line. On the right, a quarter note with a stem pointing up and a flag, positioned on the line. Below the staff, the Japanese characters 'ウ' and 'ト' are written.

A musical staff with a horizontal line. On the left, a quarter note with a stem pointing down and a flag, positioned below the line. On the right, a quarter note with a stem pointing up and a flag, positioned on the line. Below the staff, the Japanese characters 'ウ' and 'ト' are written.

A musical staff with a horizontal line. On the left, a quarter note with a stem pointing down and a flag, positioned below the line. On the right, a quarter note with a stem pointing up and a flag, positioned on the line. Below the staff, the Japanese characters 'ウ' and 'ト' are written.

A musical staff with a horizontal line. On the left, a quarter note with a stem pointing down and a flag, positioned below the line. On the right, a quarter note with a stem pointing up and a flag, positioned on the line. Below the staff, the Japanese characters 'ウ' and 'ト' are written.

A musical staff with a horizontal line. On the left, a quarter note with a stem pointing down and a flag, positioned below the line. On the right, a quarter note with a stem pointing up and a flag, positioned on the line. Below the staff, the Japanese characters 'ウ' and 'ト' are written.

A musical staff with a horizontal line. On the left, a quarter note with a stem pointing down and a flag, positioned below the line. On the right, a quarter note with a stem pointing up and a flag, positioned on the line. Below the staff, the Japanese characters 'ウ' and 'ト' are written.